



# Catalog 2026





It all started as a family project with a clear idea: to create shoes that truly take care of us. Today, with over 19 years of experience, we continue to grow and are now present on every continent.

Our mission hasn't changed:

**We remain committed to making healthy shoes.**

Because every step matters, we design shoes that combine comfort, style, and functionality, improving the quality of life for those who wear them. With high standards of quality and certifications, our models are made to support you exactly where you need them most.



3 million pairs sold.



Presence in over 65 countries.



4,500 distribution points.



60,000 pairs donated to those who need them most.

# 01

## Sneakers

- Alma
- Alma Velcro
- Alma Ortho
- Lätt
- Vinter
- Stabil
- Asgard
- Hast
- Stabil Safety
- Asgard Safety
- Insoles

# 02

## Clogs

- Oden+
- Vidar+
- Ivar
- Thor+ / Thor+ Enclosed
- Magnus

# 03

## Shoes

- Andor
- Edda
- Erik
- Bo
- Dag
- Klar
- Natt
- Blom
- Skog
- Frida
- Eir
- Aneto
- Nord





# Alma

## Comfortable, Lightweight & Ergonomic

Featuring the innovative ArchTech™ insole for superior arch support.



➤ Lifestyle ➤ Healthcare ➤ Nursing Home ➤ Hospitality ➤ Beauty&Wellness

Alma is a unisex, ultra-lightweight, slip-resistant, and ergonomic sneaker designed for exceptional comfort. Featuring the innovative ArchTech™ insole, it provides advanced arch support, improving body alignment and reducing strain on the knees, feet, and back—all while delivering superior cushioning. Its slightly wider fit ensures extra comfort during long hours of standing or walking, while the CoolTech™ lining keeps feet dry and fresh.

The certified slip-resistant EVA and rubber outsole guarantees stability on various surfaces, making Alma the perfect choice for both work and everyday wear, especially for professionals in healthcare, hospitality, and beyond.



Alma  
Negro Black



➤ Size . talla 36 - 50

Alma  
Blanco White



➤ Size . talla 36 - 50

Alma  
Marino Navy



➤ Size . talla 36 - 50

Alma  
Gris Grey



➤ Size . talla 36 - 50

Alma  
Marrón Brown



➤ Size . talla 36 - 50



➤ Alma

# Features of Alma Everyone Loves



Every detail of Alma is designed to keep up with your pace, adapt to your lifestyle and keep you comfortable every step of the way.



## Lightweight & Ergonomic Design

Made from ultra-light, flexible, and ergonomic materials, designed to reduce fatigue during long work shifts.



## ArchTech™ Insole

Removable ArchTech™ insole with advanced arch support and superior cushioning.



## Shock Absorption

Enhanced heel shock absorption for maximum comfort with every step.



## High Breathability

Breathable CoolTech™ interior lining for moisture control, paired with an airy outer fabric to keep feet dry.



## Slip Resistance

Slip-resistant sole with high resistance (SR), compliant with the latest standards.



## Certification

CE-marked.  
Certified according to EN ISO 20347:2022+A1:2024, protection level OB+E+SR.

Alma  
Oliva Olive



➤ Size . talla 36 - 46

Alma  
Black & White



➤ Size . talla 36 - 46

Alma  
Dawn Blue



➤ Size . talla 36 - 46

Alma  
Taupe



➤ Size . talla 36 - 41

Alma  
Peachy Keen



➤ Size . talla 36 - 41





➤ Alma

# Small Details Make a Big Difference.

Thoughtful details designed to support every step you take.



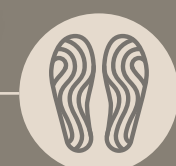
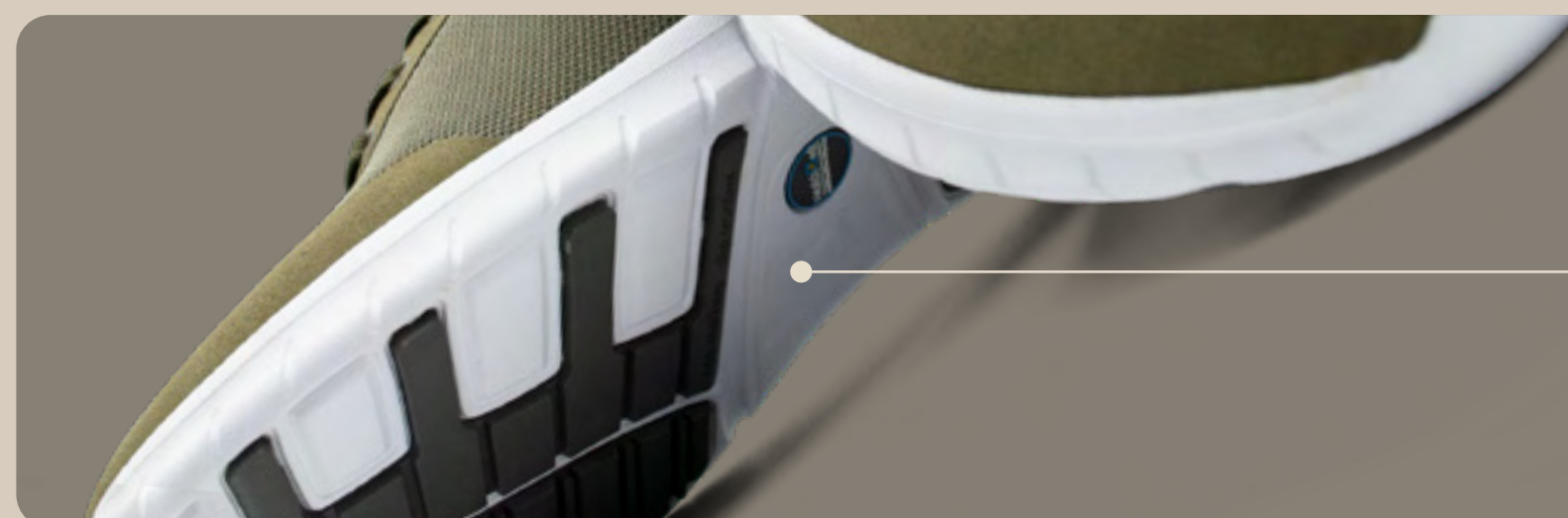
ArchTech™  
Insole

Supports foot arch and improves body alignment, reducing strain on knees, feet, and back.



CoolTech™  
Lining

Breathable CoolTech™ interior keeps feet dry and fresh.



Safety &  
Stability

Certified slip-resistant EVA and rubber outsole ensures maximum grip on all surfaces.

Alma  
Oro Gold



➤ Size . talla 36 - 41

Alma  
Plata Silver



➤ Size . talla 36 - 41







# Alma Velcro

## Easy & Customized Fit

Featuring the innovative ArchTech™ insole for arch support.



➤ Lifestyle ➤ Healthcare ➤ Nursing Home ➤ Hospitality

A variation of our classic Alma, equipped with velcro straps for an easy and customizable fit, adaptable to the top of the foot. Lightweight, slip-resistant, and ergonomic, this version is enhanced with removable ArchTech™ insoles that provide arch support for the foot, improving body alignment and protecting the knees, feet, and back, while offering superior cushioning. Its slightly wider fit ensures more comfort during long hours of standing or walking, and the CoolTech™ lining keeps feet dry. The certified slip-resistant sole ensures stability on various surfaces.



### Lightweight & Ergonomic Design

Made from ultra-light, ergonomic, and flexible material designed to reduce foot fatigue.



### Certification

CE-marked.  
Certified according to EN ISO 20347:2022+A1:2024, protection level OB+E+SR.



### High Breathability

Breathable interior lining with CoolTech™ technology to regulate moisture, combined with an exterior fabric that promotes ventilation and keeps feet dry.



### Slip Resistance

The sole offers excellent slip resistance (SR level), ensuring safety on a variety of surfaces.



### ArchTech™ Insole

Removable ArchTech™ insole that provides advanced arch support and exceptional cushioning.



### Customizable Fit

Easy-to-use velcro closure, adjustable to fit the top of the foot.

### Alma velcro Gris Grey



➤ Size . talla 36 – 46

### Alma velcro Negro Black



➤ Size . talla 36 – 46



# Alma Ortho

## Ultra-light with a Customizable Fit

Designed and optimized for orthopedic insoles.



➤ Orthopedics

➤ Health

➤ Lifestyle

Alma Ortho is a unisex model designed for individuals with specific foot support needs. It features a wider fit for enhanced comfort and a deeper heel that accommodates orthopedic insoles. The CoolTech™ lining keeps your feet dry, while the certified slip-resistant sole (SRC level) ensures safety on various surfaces.

With elastic laces for a secure fit and lightweight, breathable materials, Alma Ortho is perfect for healthcare professionals, hospitality workers, or anyone needing comfort and support throughout the day.



### Lightweight & Ergonomic Design

Made with ultra-light, ergonomic, and flexible material, designed to reduce foot fatigue.



### High Breathability

Breathable interior lining with CoolTech™ technology to regulate moisture, combined with an exterior fabric that promotes ventilation and keeps feet dry.



### Removable Insole

Removable 2.5 cm insole for added comfort, replaceable with orthopedic insoles.



### Slip Resistance

Outsole with high slip resistance (SRC level) provides safety on various surfaces.



### Elastic Laces

Elastic laces with a closure for a quick and comfortable fit.



### Deep Heel

Deeper heel design for easy insertion of orthopedic insoles.

### Alma Ortho Negro Black



➤ Size . talla 36 - 46

### Alma Ortho Marino Navy



➤ Size . talla 36 - 46





# Lätt

## Ultra-light, Breathable & Flexible

Move freely with Lätt,  
without limits.



➤ Lifestyle ➤ Fitness ➤ Healthcare ➤ Nursing Home ➤ Hospitality ➤ Catering

Designed for those seeking maximum comfort and breathability, Lätt is a versatile model ideal for everyday use. Its elastic mesh adapts to the foot like a sock, providing a flexible fit and optimal ventilation for lasting freshness and well-being.

It features a padded heel piece and a removable HoneyComb™ insole that evenly distributes pressure and promotes airflow for added comfort. The ultra-light, slip-resistant sole (SRC level) ensures excellent shock absorption and stability, allowing you to move freely and without limits.



Lätt  
Menta Mint



➤ Size . talla 36 - 41

Lätt  
Lila Lilac



➤ Size . talla 36 - 41

Lätt  
Peachy Keen



➤ Size . talla 36 - 41

Lätt  
Naranja Orange



➤ Size . talla 36 - 41

Lätt  
Blanco White



➤ Size . talla 36 - 46





➤ **Lätt**

# Features of Lätt Everyone Loves



Every detail of Lätt is designed to keep up with your pace, offering comfort and well-being with every step.



**CE-marked**

Compliant with Regulation (EU) 2016/425.



**Lightweight & Ergonomic Design**

Made with ultra-light, ergonomic, and flexible material, designed to reduce foot fatigue.



**HoneyComb™ Insole**

The removable HoneyComb™ insole promotes optimal airflow with each step, improving breathability and foot freshness.



**Slip Resistance**

Maximum stability and shock absorption for a secure walk.



**Padded Heel**

Neoprene padding in the heel offers a soft, ergonomic fit, enhancing comfort and reducing pressure during prolonged use.

Lätt  
Black & White



➤ Size . talla **36 - 46**

Lätt  
Negro Black



➤ Size . talla **36 - 46**



**Breathable Elastic Mesh**

Fits like a sock, offering flexibility and freshness.





# Vinter

## Water-repellent & Slip-resistant

Experience unparalleled comfort with Vinter.



➤ Lifestyle   ➤ Healthcare   ➤ Nursing Home   ➤ Hospitality   ➤ Catering

Crafted with a DuPont™ water-repellent nylon outer layer, Vinter shoes keep your feet dry in wet environments. The CoolTech™ lining ensures breathability and moisture control, keeping your feet fresh throughout the day. The slip-resistant EVA and rubber sole provides stability and a secure grip on various surfaces, enhancing safety in dynamic work environments. For superior comfort, Vinter includes the removable ActiveFoam™ insole, which cushions each step and reduces fatigue, making them ideal for prolonged use. Lightweight, ergonomic, and flexible, Vinter shoes are designed to provide optimal support and comfort at the same time.



Vinter  
Marino Navy



➤ Size . talla 36 - 46

Vinter  
Vino Wine



➤ Size . talla 36 - 46

Vinter  
Negro Black



➤ Size . talla 36 - 46

Vinter  
Black & White



➤ Size . talla 36 - 46





> **Vinter**

# Vinter's Outstanding Features

Every detail of Vinter is crafted to move with your pace, providing comfort and support at every moment.



**CE-marked**

Compliant with Regulation (EU) 2016/425.



**Slip-Resistant Sole**

Slip-resistant on various surfaces, reaching the highest SR level according to EN ISO 20347:2022.



**Durability & Protection**

Reinforced TPU (Thermoplastic Polyurethane) toe cap offers greater durability and protection.



**Breathable CoolTech™ Lining**

Promotes ventilation and keeps your feet fresh all day long.



**Water-Repellent**

The nylon outer fabric offers excellent water-repellent properties.



**Perfect Cushioning**

Ultra-light and innovative EVA sole, combined with ActiveFoam™ insole, ensures every step is perfectly cushioned.





# Stabil

## Built for Comfort, Lightness & Grip

HoneyComb™ insole optimizes  
airflow and keeps feet dry.



➤ Healthcare   ➤ Nursing Home   ➤ Hospitality   ➤ Catering   ➤ Cleaning

The unisex Stabil work shoes combine versatility, durability, and a modern design, making them ideal for long workdays. Made with breathable, quick-drying materials, they keep your feet fresh and comfortable all day long. Certified with EN ISO 20347:2012, these shoes are anti-static, slip-resistant, and extremely lightweight, making them perfect for work environments where comfort and safety are essential. The wide heel provides extra stability, while the HoneyComb™ insole, standing out for its high breathability, improves airflow and keeps feet dry.

The slip-resistant sole ensures excellent traction on various surfaces, making Stabil shoes a reliable and comfortable choice for daily work.



Stabil  
Maritime blue



➤ Size . talla   36 - 46

Stabil  
Negro Black



➤ Size . talla   36 - 46

Stabil  
Blanco White



➤ Size . talla   36 - 46

Stabil  
Gris Grey



➤ Size . talla   36 - 46

Stabil  
Marino Navy



➤ Size . talla   36 - 46





> **Stabil**

# Key Features of Stabil

Every detail of Stabil is designed to keep up with your work pace, offer comfort and support throughout the day.



## Certification

CE-marked.  
Certified according to EN ISO 20347:2012, protection level O1+SRC.



## Lightweight & Ergonomic Design

Made with ultra-light, ergonomic, and flexible materials, designed to reduce fatigue during long workdays.



## HoneyComb™ Insole

The removable HoneyComb™ insole promotes optimal airflow with each step, improving breathability and foot freshness.



## Anti-Static Properties

Features anti-static properties designed to prevent the buildup of static electricity and reduce the risk of electric shocks.



## Padded Heel

Neoprene padding in the heel offers a soft, ergonomic fit, enhancing comfort and reducing pressure during prolonged use.



## Slip Resistance

EVA and rubber sole with high slip resistance (SRC level), designed to provide maximum grip and stability on slippery surfaces.





# Asgard

## Durable, Breathable & Superior Traction

With Asgard, work at peak performance and comfort.



➤ Healthcare ➤ Nursing Homes ➤ Hospitality ➤ Food Service ➤ Logistics

Asgard is a unisex work shoe designed to provide safety, durability, and comfort in the most demanding environments. Made from water-resistant, high-durability nylon and featuring an EVA sole with full rubber coating, it strikes the perfect balance between lightweight support, stability, and cushioning.

Its innovative removable ActiveFoam™ insole delivers superior cushioning and helps reduce fatigue, ensuring lasting comfort throughout long work shifts. The EasyFit™ heel allows for a quick, effortless slip-on, while the SafeLace™ system keeps laces secure and tucked away to prevent tripping hazards.

Asgard is the perfect choice for professionals who require maximum protection without compromising on comfort.



Asgard  
Negro Black



➤ Size . talla 36 - 46

Asgard  
Blanco White



➤ Size . talla 36 - 46





> Asgard

# What Makes Asgard Stand Out?



Every detail of Asgard is designed to keep up with your work pace, providing comfort and support throughout the day.



## SafeLace™ System

Its velcro-secured tongue design keeps laces tucked away and secure, enhancing safety and comfort at work.



## ActiveFoam™ Insole

The removable ActiveFoam™ insole offers superior cushioning and helps reduce fatigue.



## Fuel & Oil Resistance

The oil- and hydrocarbon-resistant sole ensures durability in tough environments, protecting against aggressive substances.



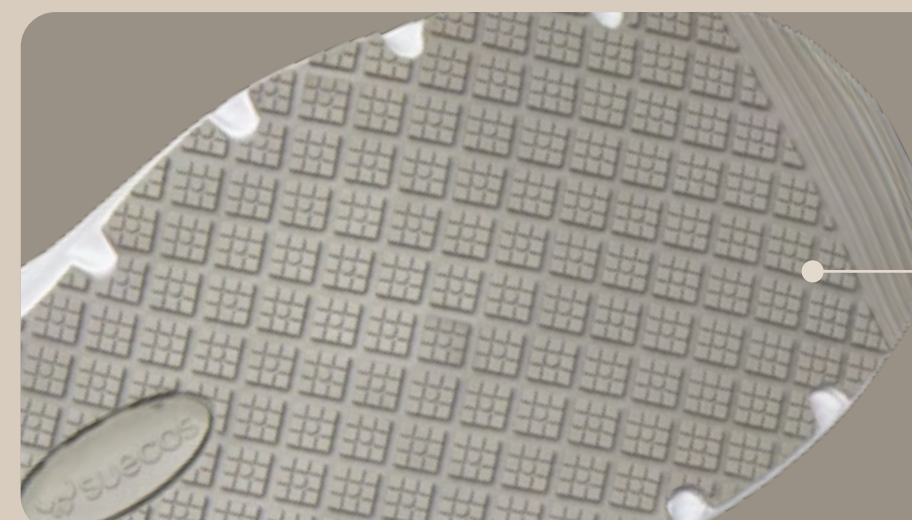
## Certification

CE-marked.  
Certified to EN ISO 20347:2022+A1:2024, protection level O1+SR+FO.



## EasyFit™ Padded Heel

A double-padded heel with EasyFit™ system allows for a comfortable, effortless slip-on experience.



## Superior Traction

The 100% rubber-coated EVA sole delivers exceptional slip resistance for maximum safety.





# Hast

## Maximum Speed, Zero Effort

Hast is built to keep you moving—nothing gets in your way.



➤ Healthcare ➤ Nursing Homes ➤ Hospitality ➤ Food Service ➤ Cleaning ➤ Logistics

Hast is a unisex work shoe designed to deliver agility, safety, and comfort with minimal effort. Built for demanding environments, it features durable materials and smart design that supports every move.

Made with water-repellent, high-resistance fabric, Hast keeps your feet dry and protected in any condition. Its innovative Spin-On™ system uses a twist dial for a fast, secure fit—no laces needed.

The EasyFit™ heel makes it quick and effortless to slip on, perfect for professionals on the go. A lightweight EVA sole with full rubber coverage provides stability, grip, and excellent cushioning—ideal for long hours on your feet.



Hast  
Black&White



➤ Size 36 - 46

Hast  
Black



➤ Size 36 - 46





> **Hast**

# Why you'll want to wear hast every day



Every detail of Hast is designed to move with you—delivering speed, comfort, and support from the first step to the last.



## EasyFit™ Padded Heel

A double-padded heel with EasyFit™ system allows for a comfortable, effortless slip-on experience.



## ActiveFoam™ Insole

The removable ActiveFoam™ insole offers superior cushioning and helps reduce fatigue.



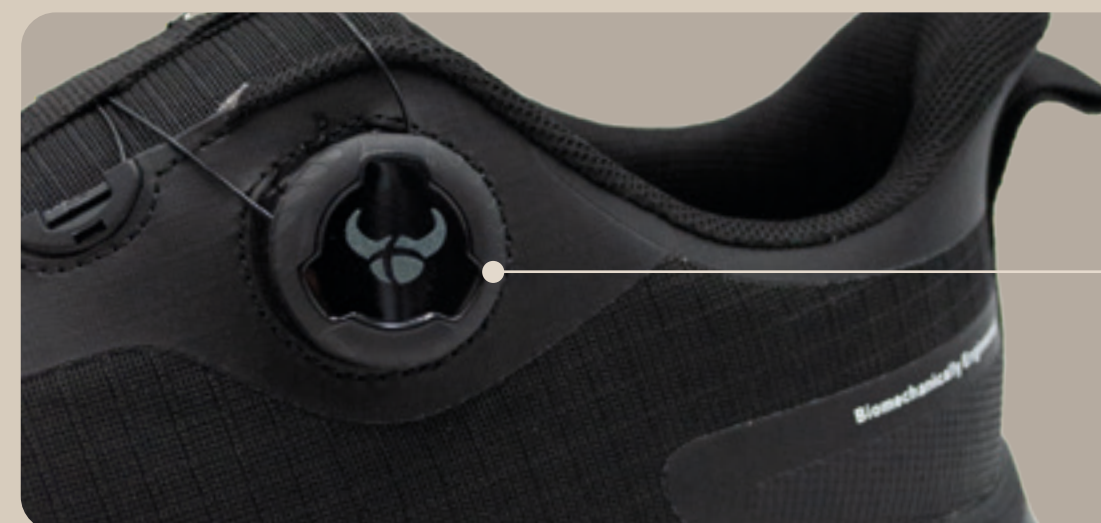
## Fuel & Oil Resistance

The oil- and hydrocarbon-resistant sole ensures durability in tough environments, protecting against aggressive substances.



## Certification

CE-marked.  
Certified to EN ISO 20347:2022+A1:2024, protection level O1+SR+FO.



## Spin-On™ System

Forget laces—just turn the dial for a quick, secure fit that stays in place all day. It's fast, easy, and built to keep up with you.



## Superior Traction

The 100% rubber-coated EVA sole delivers exceptional slip resistance for maximum safety.





# Stabil Safety

## Protection, Style & Lightweight Comfort

S1 safety shoes inspired by the classic Stabil, combining style and protection.



➤ Logistics    ➤ Maintenance    ➤ Factory    ➤ Light Construction

The Stabil Safety shoe is inspired by the iconic Stabil, blending style, protection, and lightweight comfort into a modern design. Equipped with a certified safety toe cap according to EN ISO 20345:2022, it provides maximum impact protection.

Its ultra-light, breathable mesh fabric keeps feet cool during long work shifts, delivering exceptional comfort. Additionally, its slip-resistant sole and anti-static properties ensure stability and safety with every step.

Designed for professionals in warehouses, factories, light construction, logistics, and maintenance, Stabil Safety is the perfect choice for those seeking a secure, lightweight, and functional shoe for demanding environments.



Stabil Safety  
Gris Grey



➤ Size . talla 36 – 46

Stabil Safety  
Negro Black



➤ Size . talla 36 – 46





> **Stabil safety**

# Features of Stabil Safety that make a difference 😊

Every detail of Stabil Safety is designed to keep up with your work pace, providing you with comfort and support throughout your day.



## Certification

CE-marked.  
Certified according to EN ISO 20345:2022, protection level S1+SR.



## Lightweight & Ergonomic Design

Made from ultra-light, ergonomic, and flexible material, designed to reduce fatigue during long work hours.



## Maximum Breathability

Interior lining with CoolTech™ technology and HoneyComb™ insole to regulate moisture and enhance ventilation, keeping feet fresh and dry.



## Slip Resistance

EVA and rubber sole provides optimal grip and stability, minimizing the risk of slipping on demanding surfaces.



## Metal Safety Toe Cap

Certified aluminum safety toe cap, lightweight yet highly resistant to impacts of up to 200 J.



## Padded Heel

Neoprene padding in the heel offers a soft, ergonomic fit, enhancing comfort and reducing pressure during prolonged use.





# Asgard Safety

## Maximum Protection, Maximum Comfort

S1PS metal-free safety shoes, the evolution of Asgard, combining enhanced protection and comfort for every workday.



Size 36 - 46

Logistics Maintenance Factory Light Construction

The Asgard Safety shoe evolves the classic Asgard design by incorporating an innovative ETPU (Expanded Thermoplastic Polyurethane) midsole, a high-performance material that delivers reactive cushioning, lightweight support, and superior energy return.

It features a composite safety toe and a textile anti-puncture insole, providing reliable protection against impacts, perforations, and slips. Its water-resistant upper offers added protection against spills and moisture, helping to keep feet dry in demanding environments.

The removable ActiveFoam™ insole adds extra cushioning to reduce fatigue, while the EasyFit™ system ensures quick and effortless on/off. Designed for professionals in logistics, maintenance, factories, light construction, and mechanics, Asgard Safety combines advanced protection, comfort, and durability, standing out in the market thanks to its high-performance ETPU midsole.



### Anti-Puncture Protection

Textile anti-puncture midsole that protects the foot from sharp objects underfoot.



### Certification

CE-marked.  
Certified to  
EN ISO 20345:2022+A1:2024,  
protection level S1PS SR FO.



### ActiveFoam™ Insole

The removable ActiveFoam™ insole offers superior cushioning and helps reduce fatigue.



### Fuel & Oil Resistance

The oil- and hydrocarbon-resistant sole ensures durability in tough environments, protecting against aggressive substances.



### Reactive Cushioning

ETPU midsole, an innovative material that delivers uniform and responsive cushioning, excellent impact absorption, and superior energy return compared to conventional material.



### Toe Protection

Certified composite safety toe cap that withstands impacts up to 200 J and compressions up to 15 kN.



# Soft, Cushioned, and Supportive Insoles for Happy Feet.

## ArchTech™ Insole

The removable ArchTech™ insole is designed to provide exceptional arch support and high-performance cushioning. Its advanced structure ensures optimal support for the arch, promoting ideal foot positioning and encouraging proper body alignment. This helps improve weight distribution, reducing fatigue and joint stress. With technology crafted for all-day comfort, ArchTech™ enhances natural movement and overall well-being.



## Active Charcoal and Coolmax® Insole

Crafted from recycled activated carbon, these antibacterial insoles are designed to eliminate moisture and odor while ensuring maximum breathability. Lined with Coolmax® fabric, they keep your feet dry, cool, and fresh even during long hours of wear. The insoles offer a perfect balance of softness, adaptability, and long-lasting comfort—enhancing the performance of our Vidar+ and Thor+ clogs.





# Soft, Cushioned, and Supportive Insoles for Happy Feet.

## Gel-Tech Insole

Experience all-day comfort with three-layer technology that makes you feel like you're walking on air. The superior gel layers provide cushioning and absorb shock, helping to keep your feet, knees, and back strong and healthy. The activated carbon layers eliminate moisture and remain breathable, while the anti-odor and antibacterial properties ensure your feet stay fresh throughout the day.



## Activated Charcoal Insole

Made with activated carbon, this insole keeps your feet fresh and comfortable all day long. Its antibacterial and anti-odor properties effectively eliminate moisture, while the breathable foam ensures your feet stay dry and cool.







# Oden + Comfortable, Versatile & Stylish

Slip-resistant sole and textured interior that stimulates circulation.



➤ Healthcare ➤ Nursing Home ➤ Hospitality ➤ Beauty & Wellness ➤ Lifestyle

Oden+ work clogs combine everything you need in professional footwear—comfort, safety, and durability—without compromising on style. Designed with an ergonomic fit and heel shock absorption, they help relieve muscle fatigue, making them perfect for long shifts in healthcare and other demanding environments.

The 3 cm technical heel enhances stability and posture, while ventilation holes promote airflow to keep your feet cool and dry. The foldable back strap provides extra support when needed, and the textured inner surface gently stimulates blood circulation for added comfort throughout the day.

Made with a slip-resistant EVA and rubber sole, Oden+ ensures reliable grip across various surfaces. They're lightweight, flexible, and can be cold-sterilized with UV light or hydrogen peroxide—perfect for professionals who need all-day performance with a touch of style.



Oden+  
Negro Black



➤ Size . talla 36 - 46

Oden+  
Azul Blue



➤ Size . talla 36 - 46

Oden+  
Blanco White



➤ Size . talla 36 - 46

Oden+  
Rosa Pink



➤ Size . talla 36 - 41

Oden+ Print  
Medical Pink



➤ Size . talla 36 - 41



# Features of Oden+ and Oden+ Print



Every detail is crafted to move with you, adapting to your rhythm and keeping you comfortable all day long.



## Lightweight

Made from ultralight, ergonomic, and flexible material, designed to reduce fatigue even after long working hours.



## Stylish with Personality

Available in a wide range of unique colors and prints, so you can work in comfort without compromising your personal style.



## Shock Absorption

Enhanced heel cushioning for a softer, more comfortable step.



## High Breathability

Strategically placed ventilation holes promote airflow, keeping your feet cool and fresh.



## Safety

Slip-resistant sole ensures stability and safety on wet or slippery surfaces.



## Certification

CE-marked.  
Certified according to EN ISO 20347:2012, protection level OB+E+SRC.

### Oden+ Print Jungle



> Size . talla 36 - 41

### Oden+ Print Syster



> Size . talla 36 - 45

### Oden+ Print Midsummer



> Size . talla 36 - 42

### Oden+ Print Liv



> Size . talla 36 - 41

### Oden+ Print Water Flower



> Size . talla 36 - 41





➤ Oden+

# Small Details Make a Big Differences.

Thoughtful features that support every  
step you take.

Oden+ Enfermera en apuros  
TCAE



➤ Size . talla 36 - 42

Oden+ Enfermera en apuros  
Animalitos Animals



➤ Size . talla 36 - 42

Oden+ Enfermera en apuros  
Rosa Pink



➤ Size . talla 36 - 42

Oden+ Enfermera en apuros  
Aguamarina Aquamarine



➤ Size . talla 36 - 42



Technical Heel

The 3 cm technical heel is designed to enhance  
stability and promote proper body alignment.



Slip-Resistant  
Sole

Certified slip-resistant sole offers traction and  
safety, even on wet or slippery surfaces.



Gentle Massage  
with Every Step

The textured interior provides a light massaging  
effect that stimulates circulation and enhances  
walking comfort.







# Vidar+

## Durable, Ultra-light & Slip-resistant

Clogs specially designed for healthcare environments.



➤ Healthcare   ➤ Nursing Home   ➤ Hospitality   ➤ Catering

Vidar+ clogs combine a lightweight design with antibacterial properties and excellent grip, thanks to the slip-resistant rubber pads in the sole, making them perfect for slippery environments. Specifically designed for the healthcare sector, they offer exceptional comfort during long shifts, thanks to their ergonomic design and impact absorption system.

Equipped with strategically placed ventilation holes, Vidar+ clogs improve airflow, keeping your feet cool and comfortable throughout the day. Additionally, their reinforced heel provides greater coverage and stability compared to the classic Oden model. The foldable back strap ensures a secure fit, while the textured interior stimulates circulation while walking, further enhancing comfort and foot vitality.



Vidar+  
Negro Black



➤ Size . talla 36 - 46

Vidar+  
Verde Green



➤ Size . talla 36 - 46

Vidar+  
Azul Blue



➤ Size . talla 36 - 46

Vidar+  
Blanco White



➤ Size . talla 36 - 46





> Vidar+

# Key Features of Vidar+



Every detail of Vidar+ is designed to keep up with your work pace, providing comfort and support throughout your shift.



## Certification

CE-marked.  
Certified according to EN ISO 20347:2012, protection level OB+SRC+E.



## Lightweight & Ergonomic Design

Made from ultra-lightweight, ergonomic, and flexible material designed to reduce foot fatigue.



## Breathability

Ventilation holes improve airflow and prevent overheating.



## Slip Resistance

Sole with high slip resistance (SRC level), ensuring safety on various surfaces



## Reinforced Toe Area

Higher-density toe area for increased resistance and protection against light impacts.



## Partially Covered Heel

Design that improves breathability and comfort, offering more protection compared to open-heel clogs.



# Ivar

## Hygiene, Safety & Comfort

Anti-static and slip-resistant surgical clogs, designed for healthcare professionals.



➤ Healthcare    ➤ Cleanroom    ➤ Operating room

Ivar clogs are specifically designed for healthcare environments, offering the perfect combination of hygiene, comfort, and safety. Made from anti-static, hypoallergenic thermoplastic polymer, they provide optimal protection, while strategically placed ventilation holes ensure efficient airflow without the risk of liquid infiltration.

With an adjustable and foldable strap, they offer a personalized fit for enhanced stability. Their ergonomic design evenly distributes weight, reducing fatigue during long shifts. The SRC-certified slip-resistant sole provides superior traction on various surfaces and offers a massaging effect for prolonged comfort in demanding environments. Additionally, their easy sterilization makes them the ideal choice for operating rooms and other sterile environments.



### Premium Material

Made from anti-static, hypoallergenic, and highly durable thermoplastic polymer.



### Certification

CE-marked.  
Certified according to EN ISO 20347:2012 with protection level SRC+OB+A+E.



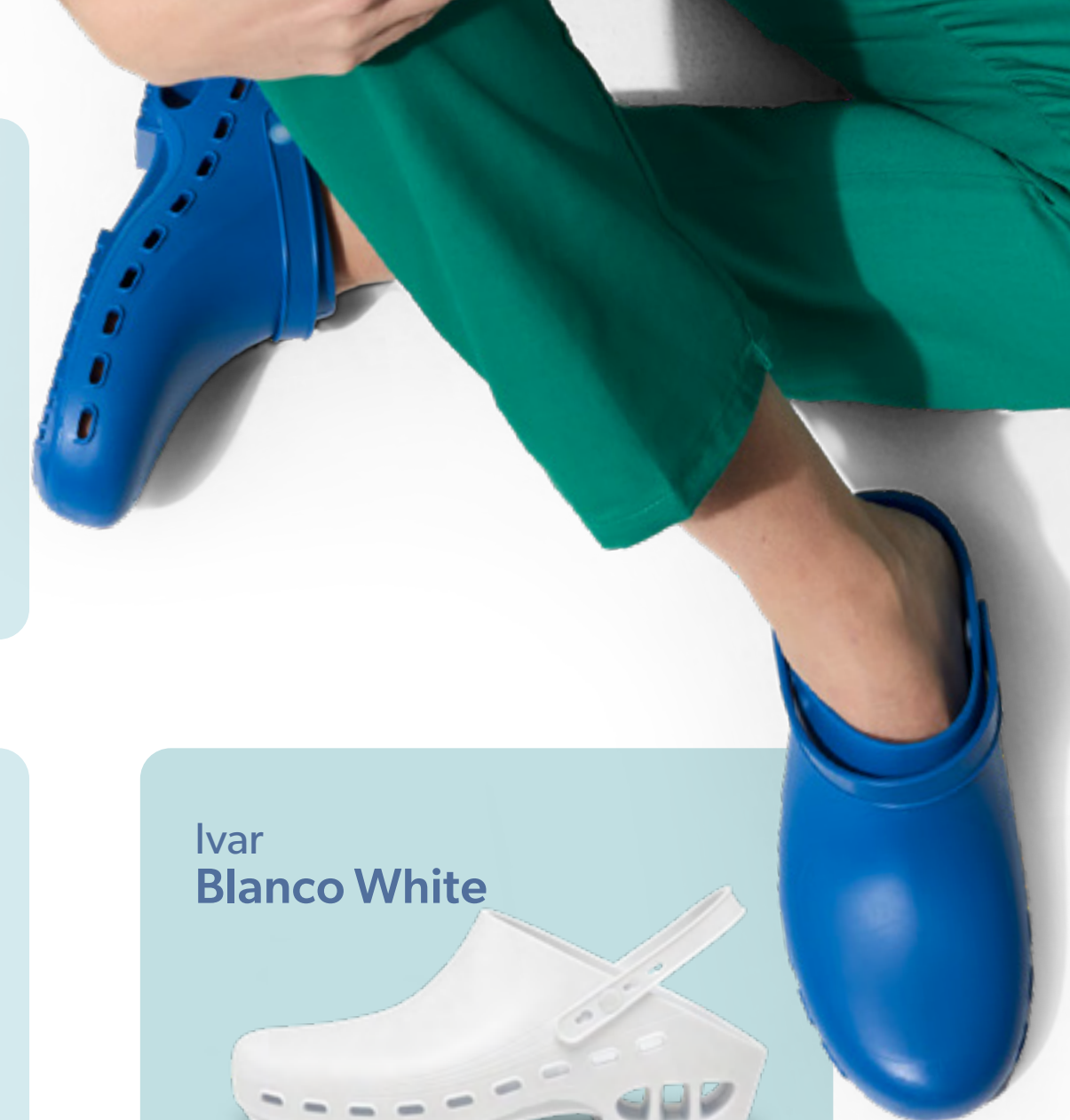
### Superior Traction

High slip-resistant SRC-certified sole ensures optimal grip on different surfaces.



### Anti-Static Properties

Prevents static electricity buildup and reduces the risk of electric discharges.



### Ivar Blanco White



➤ Size . talla 34/35 – 46/47



### Autoclavable

Sterilizable in an autoclave up to 134°C, ensuring maximum hygiene.

### Ivar Verde Green



➤ Size . talla 34/35 – 46/47



### Adjustable Heel Strap

Allows a customized fit, providing stability with every step.

### Ivar Azul Blue



➤ Size . talla 34/35 – 46/47





# Thor+ / Thor+ Enclosed

## Safety & Guaranteed Comfort

Work clogs specifically designed for the hospitality industry.



➤ Hotel   ➤ Kitchen   ➤ Catering   ➤ Food Industry   ➤ Cleaning

The Thor+ and Thor+ Enclosed clogs are engineered to provide an exceptional combination of safety and comfort in slippery environments, making them perfect for kitchens, restaurants, catering, supermarkets, and other demanding workplaces.

Both models feature a partially covered heel and a reinforced toe area for superior durability and effective protection during long work hours. The certified slip-resistant sole (SRC level) ensures optimal grip on wet and greasy surfaces, providing maximum safety at all times.

The Thor+ model includes strategically placed ventilation holes to improve airflow, keeping your feet cool and comfortable throughout the day. On the other hand, the Thor+ Enclosed model has closed ventilation holes, preventing liquid penetration for enhanced protection in environments where liquids pose a risk.



Thor+  
Negro Black



➤ Size . talla 36 - 46

Thor+  
Blanco White



➤ Size . talla 36 - 46

Thor+ Enclosed  
Negro Black



➤ Size . talla 36 - 46

Thor+ Enclosed  
Blanco White



➤ Size . talla 36 - 46





➤ Thor+ / Thor+ Enclosed

# Features of Thor+ and Thor+ Enclosed

Every detail is designed to keep up with your workday, providing comfort and support every step of the way.



## Certification

CE-marked.  
Certified according to EN ISO 20347:2012 with protection level OB+SRC+E.



## Lightweight & Ergonomic Design

Made with ultralight, ergonomic, and flexible materials designed to reduce foot fatigue.



## Partially Covered Heel

A design that enhances breathability and comfort, offering more protection compared to open-heel clogs.



## Slip Resistance

High slip-resistant (SRC level) sole ensures safety on various surfaces.



## Waterproof

Thor+ Enclosed features sealed holes that prevent liquid infiltration.



## Reinforced Toe Area

A reinforced toe area with higher density for greater resistance and protection against light impacts.





# Magnus

## Resistance, Protection & Superior Traction

Metal-free SB safety clogs for all work environments.



⊗ Hospitality ⊗ Food Service ⊗ Kitchen ⊗ Nursing Home ⊗ Healthcare ⊗ Logistics

The Magnus clog is designed to offer exceptional protection and durability in demanding work environments. Its fiberglass-reinforced toe cap withstands impacts of up to 200 joules, providing superior safety while being 50% lighter than conventional steel toe caps.

Despite its high resistance, the Magnus maintains a lightweight, ergonomic, and comfortable design, allowing for prolonged use without causing fatigue. It features a reinforced heel for additional protection and a cushioned insole with arch support, offering extra comfort and stability.

The slip-resistant sole, along with its anti-static and antimicrobial properties, ensures a firm grip, reducing the risk of slips and improving hygiene. Its adjustable safety strap ensures a perfect fit, while its waterproof, ultra-lightweight, and flexible structure make it the ideal choice for sectors like gastronomy, hospitality, and other work environments that require maximum safety and comfort.



Magnus  
Negro Black



⊗ Size . talla 36 - 46

Magnus  
Blanco White



⊗ Size . talla 36 - 46





> Magnus

# Features of Magnus that Everyone Loves

Every detail of Magnus is designed to keep up with your work pace, providing comfort and support throughout your day.



## Certification

CE-marked.  
Certified according to EN ISO 20345:2011, SB+SRC+A+E protection level.



## Waterproof and Lightweight Design

Made with water-resistant, flexible, and lightweight materials, offering comfort without sacrificing protection or durability.



## Advanced Insole

Removable insole with double cushioning that offers arch support and superior cushioning, improving comfort during long shifts.



## Anti-Static Properties

Designed to dissipate static electricity, reducing the risk of electric shocks in sensitive work environments.



## Maximum Protection

Metal-free protection with a fiberglass toe cap that resists impacts of up to 200 J and compression of up to 15 kN.



## Extra Lateral Traction

The sole features specially designed rubber pads that provide lateral slip resistance—an unique feature only found in our Magnus.





# Andor

## Simplicity, Comfort & Functionality

Combining lightness and support with an ergonomic design ideal for long workdays.



☉ Size . talla 36 - 46

☉ Hotel ☉ Restaurant ☉ Café ☉ Catering ☉ Office

Designed with water-repellent microfiber and a breathable CoolTech™ lining, they keep feet dry while allowing excellent ventilation for added comfort throughout the day. Their ultra-lightweight and ergonomic design ensures flexibility, and the slightly wider fit provides greater comfort. The slip-resistant certified EVA and rubber sole ensures safety on various surfaces. The elastic band allows for a secure fit, while the removable HoneyComb™ insole promotes airflow and offers anti-static protection. Built for durability and comfort, these shoes also feature impact-absorbing technology in the heel to provide extra support during long working hours. Andor is the perfect choice for professionals seeking both protection and comfort.



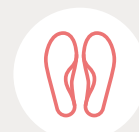
### Lightweight & Ergonomic

Made from ultra-light, ergonomic, and flexible material designed to reduce fatigue during long workdays.



### Certification

CE-marked.  
Certified according to EN ISO 20347:2012, protection level O1+SRC.



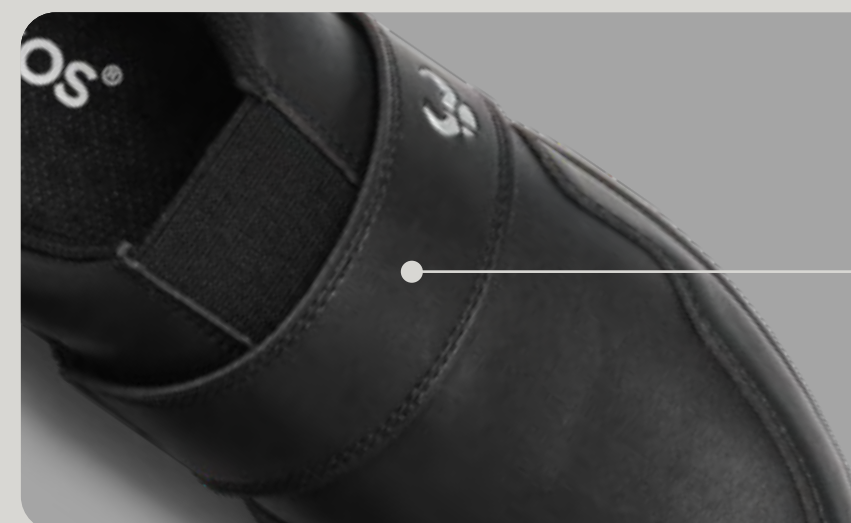
### HoneyComb™ Insole

The removable HoneyComb™ insole promotes optimal airflow with every step, improving breathability and keeping feet fresh.



### Certified Slip-Resistant Sole

EVA and rubber sole to ensure safety on various surfaces.



### Elastic Band

Allows for a secure and comfortable fit without the need for laces.



### Breathable CoolTech™ Lining

Promotes ventilation and keeps your feet fresh all day long.



# Edda

## Simplicity, Comfort & Functionality

Combining lightness and support with an ergonomic design ideal for long workdays.



Size . talla 36 - 46

➤ Healthcare ➤ Nursing Home ➤ Hospitality ➤ Accommodation

The Edda unisex work shoes are specially designed for healthcare professionals, combining comfort, functionality, and safety. Made with water-repellent perforated microfiber and CoolTech™ lining, they keep feet dry and well-ventilated throughout long shifts.

Their ultra-lightweight and ergonomic design ensures flexibility, and the wider fit improves comfort.

The SRC slip-resistant sole ensures safety on various surfaces, while the HoneyComb™ insole promotes airflow for added breathability. With impact-absorbing technology in the heel, they provide additional support.

The Edda model is perfect for professionals looking for both performance and comfort.



Elastic Band

Allows for a secure and comfortable fit without the need for laces.



Certified Slip-Resistant Sole

Slip-resistant EVA and rubber sole ensures safety on various surfaces.



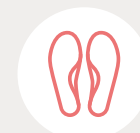
Lightweight & Ergonomic Design

Made from ultra-light, ergonomic, and flexible material designed to reduce fatigue during long workdays.



Certification

CE-marked.  
Certified according to EN ISO 20347:2012, protection level O1+SRC.



HoneyComb™ Insole

The removable HoneyComb™ insole promotes optimal airflow with every step, improving breathability and keeping feet fresh.



Breathable CoolTech™ Lining

Promotes ventilation and keeps your feet fresh all day long.







# Erik

## Ultra-light, Breathable, and Slip-Resistant

HoneyComb™ insole enhances  
airflow and keeps feet dry.



➤ Healthcare ➤ Nursing Home ➤ Cleaning ➤ Maintenance ➤ Hospitality

The unisex Erik work shoes are perfect for both professional environments and everyday wear. Made from water-repellent perforated microfiber with a breathable CoolTech™ lining, they keep your feet dry while ensuring excellent ventilation for all-day comfort.

Their ultra-lightweight and ergonomic design provide great flexibility, while the slightly wider fit offers extra comfort. The EVA and rubber slip-resistant outsole, reaching SRC level, ensures reliable grip on various surfaces. Elastic laces allow for an easy and secure fit.

Additionally, the HoneyComb™ insole promotes airflow, and the shock-absorbing heel technology helps reduce fatigue, providing extra support.

Certified according to EN ISO 20347:2012 and compliant with EU Regulation 2016/425, the Erik shoes are an excellent choice for professionals seeking both protection and comfort.



Erik  
Negro Black



➤ Size . talla 36 - 46

Erik  
Blanco White



➤ Size . talla 36 - 46





> Erik

# Features of Erik That Everyone Loves 😊

Every detail of Erik is designed to keep up with your work pace, providing all-day comfort and support.



## Certification

CE-marked.  
Certified according to EN ISO 20347:2012, protection level O1+SRC.



## Lightweight & Ergonomic

Made from ultra-light, flexible, and ergonomic materials, designed to reduce fatigue during long work shifts.



## HoneyComb™ Insole

The removable HoneyComb™ insole ensures optimal airflow, enhancing breathability and freshness with every step.



## Slip-Resistant Outsole

EVA and rubber outsole guarantees safety on various surfaces.



## Elastic Closure

Ensures a secure and comfortable fit without the need for laces.



## Shock Absorption

Integrated shock-absorbing heel technology for enhanced comfort and reduced fatigue throughout the day.





# Bo

## Easy & Customized Fit

HoneyComb™ insole enhances airflow and keeps feet dry.



➤ Healthcare   ➤ Nursing Home   ➤ Hospitality   ➤ Accommodation

The unisex Bo work shoes are designed for professionals seeking maximum comfort, functionality, and safety throughout their workday. Made from water-repellent microfiber and featuring a CoolTech™ lining, they help keep feet dry and well-ventilated, even during long shifts. Their ultra-light and ergonomic design, combined with a wide fit, ensures enhanced comfort and freedom of movement. The velcro strap closure allows for a quick, secure fit, making them easy to wear. The certified slip-resistant (SRC level) outsole provides excellent traction on various surfaces, minimizing the risk of slipping. Additionally, the HoneyComb™ insole optimizes airflow, while the shock-absorbing heel technology helps reduce fatigue and provides extra support. The Bo model is the perfect choice for those in need of durable, comfortable, and practical footwear for daily work.



Bo  
Negro Black



➤ Size . talla   36 - 46

Bo  
Blanco White



➤ Size . talla   36 - 46





> Bo

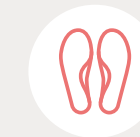
# Outstanding Features of Bo

Every detail of Bo is designed to keep up with your work pace, providing all-day comfort and support.



## Lightweight & Ergonomic Design

Made from ultra-light, flexible, and ergonomic materials, designed to reduce fatigue during long work shifts.



## HoneyComb™ Insole

The removable HoneyComb™ insole ensures optimal airflow, enhancing breathability and freshness with every step.



## Slip-Resistant Sole

Slip-resistant EVA and rubber sole guarantees safety on various surfaces.



## Certification

CE-marked.  
Certified according to EN ISO 20347:2012, protection level O1+SRC.



## Velcro Strap Closure

Ensures a secure and comfortable fit without the need for laces.



## Shock Absorption

Enhanced heel cushioning for a softer, more comfortable step.





# Dag

## Ultralight, Breathable & Slip-Resistant

HoneyComb™ insole optimizes airflow and keeps feet dry.



➤ Healthcare    ➤ Nursing Home    ➤ Cleaning    ➤ Lifestyle

Dag shoes are designed to provide comfort and performance in healthcare environments. Available in three colors, they perfectly adapt to the needs of healthcare professionals.

The upper, made from easy-to-clean DryFit™ material, ensures a hygienic and durable shoe. The certified slip-resistant SR rubber sole delivers outstanding grip, providing safety on slippery surfaces. Featuring elastic laces with Lace Stoppers, Dag shoes guarantee a secure and customized fit.

The removable HoneyComb™ insole offers optimal cushioning, enhances air circulation, and reduces fatigue—keeping you comfortable throughout the day.



Dag  
Aguamarina Aquamarine



➤ Size . talla 36 - 41

Dag  
Peachy Keen



➤ Size . talla 36 - 41

Dag  
Gris Grey



➤ Size . talla 36 - 46





> Dag

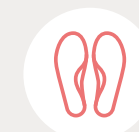
# Dag's Standout Features

Every detail of Dag is crafted to match your work rhythm, delivering lasting comfort and support from morning to night.z



## Lightweight & Ergonomic Design

Made from ultralight, ergonomic, and flexible material, designed to reduce fatigue during long work shifts.



## HoneyComb™ Insole

The removable HoneyComb™ insole promotes optimal airflow with every step, improving breathability and keeping feet fresh.



## Anti-Static Properties

Designed with anti-static properties to prevent static electricity buildup and reduce the risk of electrical discharge.



## Certification

CE-marked.  
Certified according to EN ISO 20347:2022, protection level O1+SR.



## Lace Stoppers System

Elastic laces with Lace Stoppers for a secure, effortless, and customized fit.



## Superior Traction

EVA sole fully coated with high-grip, slip-resistant rubber for exceptional traction on various surfaces.





# Klar

## Comfort, Functionality & Simplicity

Comfortable and easy-to-clean shoes for healthcare professionals.



Size . talla 36 - 46

Healthcare Nursing Home Hospitality Accommodation

Klar shoes are the perfect choice for healthcare professionals looking for comfortable, breathable, and safe footwear. The perforated upper promotes excellent ventilation, preventing moisture and bacteria buildup. The certified slip-resistant (SR level) rubber sole provides exceptional traction on various surfaces, making Klar ideal for fast-paced and demanding environments. Equipped with elastic laces and Lace Stoppers, Klar shoes offer a secure and personalized fit. The removable ActiveFoam™ insole enhances air circulation and provides superior cushioning, keeping feet fresh and dry throughout long shifts. Additionally, Klar shoes are made from easy-to-clean DryFit™ microfiber, ensuring both comfort and hygiene.



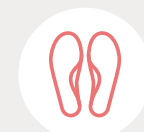
### Anti-Static Properties

Designed with anti-static properties to prevent static electricity buildup and reduce the risk of electrical discharge.



### Certification

CE-marked.  
Certified according to EN ISO 20347:2022, protection level O1+SR.



### ActiveFoam™ Insole

Removable ActiveFoam™ insole provides superior cushioning and reduces fatigue.



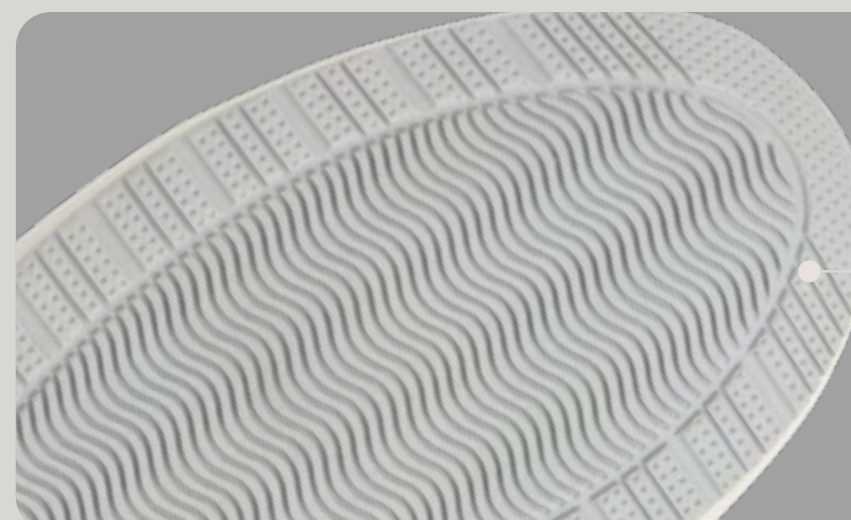
### Lace Stoppers System

Elastic laces with Lace Stoppers for a secure, effortless, and customized fit.



### DryFit™ Technology

Made from DryFit™ microfiber that prevents liquid absorption while ensuring optimal breathability.



### Superior Traction

EVA sole fully coated with high-grip, slip-resistant rubber for exceptional traction on various surfaces.





# Natt

## Comfort, Functionality & Style

Combining comfort, functionality, and an ergonomic design for long workdays.



Size . talla 36 - 46

> Hotel > Restaurant > Café > Catering > Office

Natt shoes offer the perfect balance of comfort, functionality, and elegance, making them an ideal choice for professional environments.

Designed with DryFit™ technology, these shoes keep feet dry by preventing liquid absorption while ensuring optimal breathability. Their sleek black design guarantees a professional and versatile look, suitable for any setting. The certified slip-resistant (SR level) rubber sole provides excellent grip on various surfaces, while the shock absorption technology and anti-static properties enhance safety and comfort. Featuring adjustable elastic laces with the Lace Stoppers system for a secure fit, along with a wide design for all-day comfort.



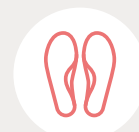
### DryFit™ Technology

Made from DryFit™ microfiber that prevents liquid absorption while ensuring optimal breathability. .



### Certification

CE-marked.  
Certified according to EN ISO 20347:2022, protection level O1+SR.



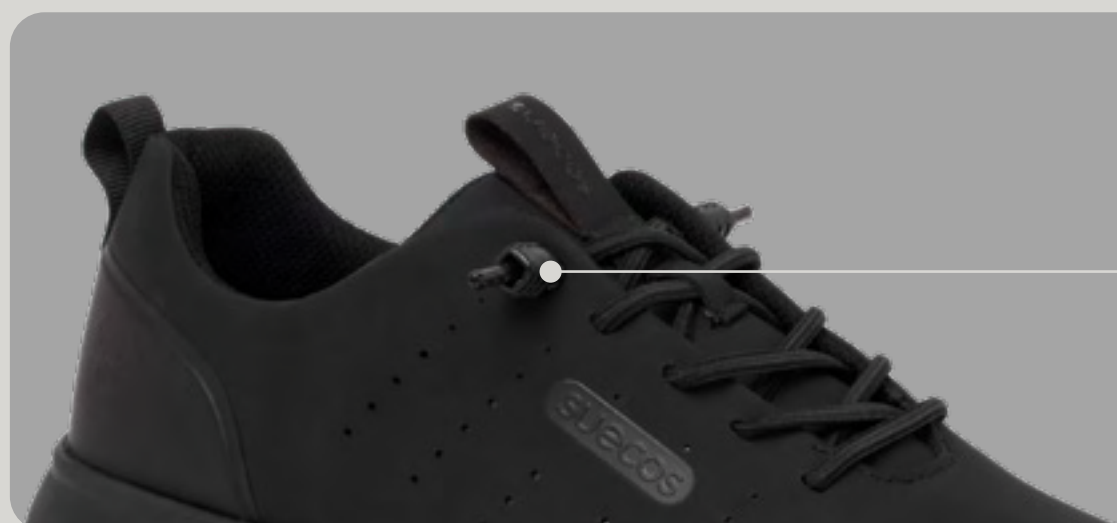
### ActiveFoam™ Insole

Removable ActiveFoam™ insole provides superior cushioning and reduces fatigue.



### Anti-Static Properties

Designed with anti-static properties to prevent static electricity buildup and reduce the risk of electrical discharge.



### Lace Stoppers System

Elastic laces with Lace Stoppers for a secure, effortless, and customized fit.



### Superior Traction

EVA sole fully coated with high-grip, slip-resistant rubber for exceptional traction on various surfaces.



# Blom

## Elegance & Comfort

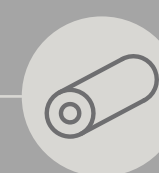
Microfiber loafer-style shoes with DryFit™ technology. The perfect footwear for women professionals seeking both comfort and style.



Size . talla 36 - 41

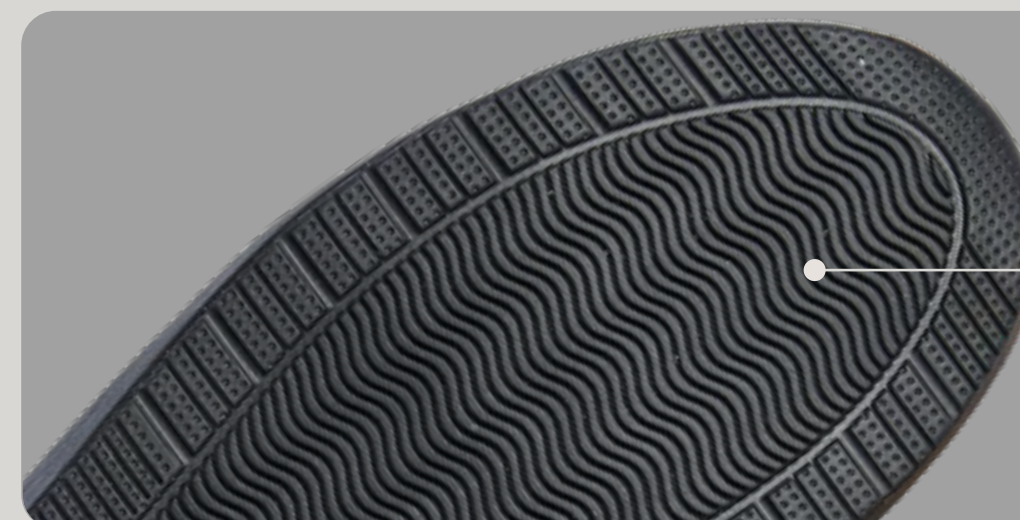
> Hotel > Restaurant > Café > Catering > Office

The Blom model is a stylish women's loafer made from high-quality microfiber, designed to complement uniforms in the hospitality sector. It features DryFit™ technology, which repels liquids while allowing breathability to keep feet dry and fresh. The ultra-light rubber sole provides excellent grip on various surfaces, while the ActiveFoam™ insole adapts to the foot's shape, delivering personalized support. Blom is the perfect companion for professionals who need both performance and style.



ExtraPadded Collar

Designed with an extra-padded collar for superior comfort and added ankle support.



Superior Traction

EVA sole fully coated with high-grip, slip-resistant rubber for exceptional traction on different surfaces.



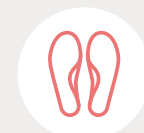
**DryFit™ Technology**

Made from DryFit™ microfiber that prevents liquid absorption while ensuring optimal breathability.



**Anti-Static Properties**

Designed with anti-static properties to prevent the buildup of static electricity and reduce the risk of electrical discharge.



**ActiveFoam™ Insole**

Removable ActiveFoam™ insole provides superior cushioning and reduces fatigue.



**Certification**

CE-marked. Certified according to EN ISO 20347:2022, protection level O1+SR.







# Skog

## Style & Comfort

Blucher-style microfiber shoes with DryFit™ technology. The perfect men's footwear for professionals seeking comfort and functionality.



Size . talla 40 - 46

➤ Hotel ➤ Restaurant ➤ Café ➤ Catering ➤ Office

The Skog shoes combine classic blucher style with advanced comfort and performance, making them ideal for professional environments.

Made with DryFit™ microfiber, these shoes keep feet dry and fresh by preventing liquid absorption while allowing breathability. The ultra-light, slip-resistant rubber sole provides excellent grip and shock absorption, ensuring stability and comfort throughout the day.

The elastic laces with the Lace Stoppers system offer a secure, customized fit with minimal effort. Additionally, the removable ActiveFoam™ insole provides superior cushioning, promotes air circulation, and reduces fatigue.



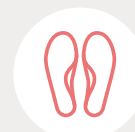
### Extra Padded Collar

Designed with an extra-padded collar for superior comfort and additional ankle support.



### Certification

CE-marked.  
Certified according to EN ISO 20347:2022, protection level O1+SR.



### ActiveFoam™ Insole

Removable ActiveFoam™ insole provides superior cushioning and reduces fatigue.



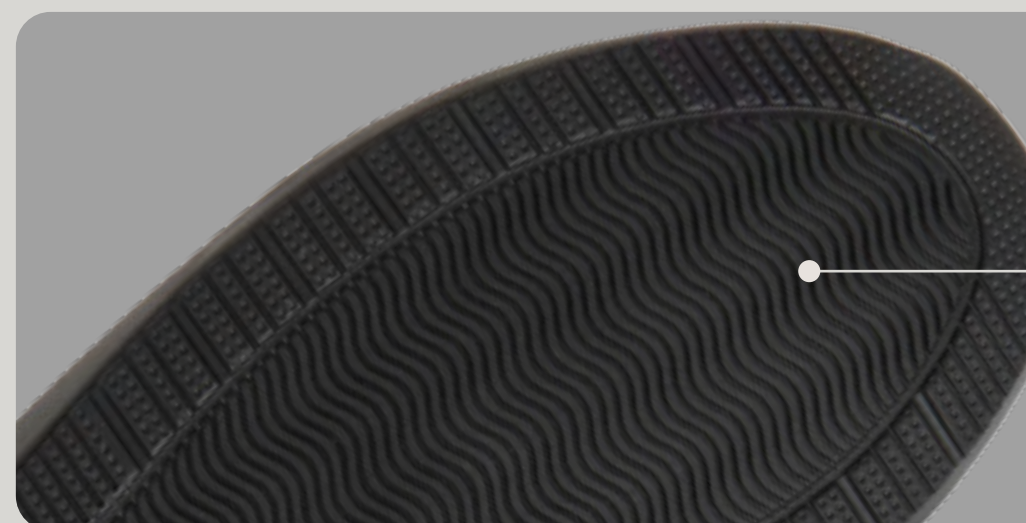
### Anti-Static Properties

Designed with anti-static properties to prevent the buildup of static electricity and reduce the risk of electrical discharge.



### Lace Stoppers System

Elastic laces with Lace Stoppers for a secure, effortless, and customized fit.



### Superior Traction

EVA sole fully coated with high-grip, slip-resistant rubber for exceptional traction on various surfaces.



# Frida

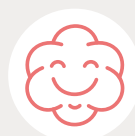
## Breathable & Flexible

Experience the perfect blend of style and functionality with the Frida ballet flats.



☞ Lifestyle ☞ Healthcare ☞ Nursing Home ☞ Beauty&Wellness

The Frida ballet flats are among the most comfortable on the market, designed to offer both style and safety—perfect for work or everyday wear. Their minimalist and versatile design effortlessly complements any outfit while ensuring all-day comfort and protection. Made from lightweight, ergonomic, and breathable materials like microfiber and mesh, they provide excellent ventilation and long-lasting comfort. The removable HoneyComb™ insole enhances airflow, while the slip-resistant outsole ensures stability with every step. Additionally, the adjustable Velcro strap allows for a secure and customized fit.



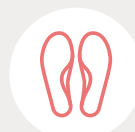
### Shock Absorption

Integrated heel shock-absorption technology enhances comfort throughout the day.



### CE-marked

Compliant with EU Regulation 2016/425.



### HoneyComb™ Insole

The removable HoneyComb™ insole promotes optimal airflow with every step, enhancing breathability and freshness.



### Slip-Resistant Sole

Slip-resistant EVA and rubber sole ensures secure traction on various surfaces.

### Frida Negro Black



☞ Size . talla 36-41

### Frida Blanco White



☞ Size . talla 36-41



### Velcro Closure

Provides a comfortable and customized fit.



### Lightweight & Ergonomic Design

Made from ultra-light, ergonomic, and flexible materials designed to reduce fatigue during long work hours.





# Eir

## Comfort, Safety and Durability

An ergonomic, lightweight, and flexible design, tailored for the healthcare environment.



Size . talla 36 - 48

Healthcare Nursing Homes Maintenance Cleaning

The Eir shoe offers the ideal combination of comfort, protection, and long-lasting durability, specifically designed for the demands of the healthcare sector. Featuring a velcro closure system, it allows for a fast, secure fit—perfect for those long, busy shifts. Its ergonomic, lightweight, and flexible design contours to the shape of the foot, ensuring optimal comfort. The slip-resistant sole provides excellent traction on wet surfaces, while energy-absorbing heel technology minimizes impact and fatigue, keeping you comfortable throughout the day. Moreover, its fuel oil resistance boosts the shoe's longevity, ensuring outstanding performance in challenging environments.



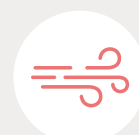
### Lightweight & Ergonomic Design

Crafted from ultra-light, ergonomic, and flexible materials, designed to reduce fatigue during long shifts.



### Certification

CE Marking.  
Certified to EN ISO 20347:2022+A1:2024, protection level O1+SR+FO.



### Maximum Breathability

The CoolTech™ lining and HoneyComb™ insole regulate moisture and enhance airflow, keeping feet fresh and dry.



### Slip & Fuel Oil Resistance

The polyurethane (PU) outsole offers high slip resistance (SR) and is designed to withstand environments with fuel oil exposure (FO).



### Velcro Closure

Quick to slip on and off, offering a secure, adaptable fit that moves with you.



### Anti-Static Features

Designed to prevent static buildup and reduce the risk of electrical discharge.





# Aneto

## Protection, Comfort, and Lightweight Design in a Slip-On

S2 safety footwear designed to deliver maximum protection and comfort in demanding work environments.



➤ Healthcare ➤ Hospitality ➤ Logistics ➤ Food Industry

The Aneto safety shoe is the perfect blend of protection, lightness, and comfort, designed to deliver top performance in demanding work environments.

Its water-repellent upper adds an extra layer of protection against spills and moisture, helping keep feet dry throughout the workday.

The slip-on design ensures a quick and secure fit, while its ultra-lightweight and breathable structure keeps feet cool and comfortable all day long.

Engineered for professionals needing protection against impacts and slippery surfaces, it is ideal for industries such as industrial kitchens, warehouses, factories, light construction, maintenance, logistics, and general industrial settings.



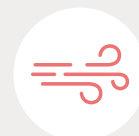
### Lightweight & Ergonomic Design

Made from ultra-lightweight, ergonomic, and flexible materials, designed to reduce fatigue during long work shifts.



### Certification

CE Marking.  
Certified to EN ISO 20345:2022 with protection level S2+SR+FO.



### Maximum Breathability

Featuring an interior lining with CoolTech™ technology and a HoneyComb™ insole, ensuring moisture control and enhanced ventilation to keep feet cool and dry.



### Slip & Fuel Oil Resistance

Durable polyurethane (PU) outsole with high slip resistance (SR), designed for environments with fuel exposure (FO).



### Slip-On Design with Extended Tongue

Laceless for a quick, secure, and convenient fit—perfect for daily use. The extended tongue provides added protection and comfort.



### Metal Safety Toe Cap

Certified steel toe cap—lightweight yet highly durable, capable of withstanding impacts of up to 200J.

### Aneto Black



➤ Size 36-48

### Aneto White



➤ Size 36-48





# Nord

## Active Comfort Timeless Style

Built to last, designed to move with you, and made to elevate every shift.



➤ Hospitality ➤ Food Service ➤ Retail ➤ Office ➤ Healthcare

The Nord unisex work shoe is built for professionals who spend long hours on their feet. Combining durability, all-day comfort, and a modern, versatile look, it's a perfect fit for demanding environments like hospitality, retail, and healthcare. Made with a durable leather upper that resists spills, and a certified slip-resistant rubber sole that offers traction on a variety of surfaces, Nord is designed for safety and confidence. Inside, the removable ActiveFoam™ insole provides responsive cushioning and energy return, helping reduce fatigue and keep you comfortable shift after shift.



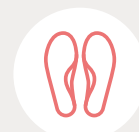
### Lightweight & Ergonomic

Flexible, ergonomic design helps reduce foot and leg fatigue during long shifts.



### CE-marked

Compliant with Regulation (EU) 2016/425.



### ActiveFoam™ Insole

Removable ActiveFoam™ insole delivers superior comfort and shock absorption.



### Slip-Resistant Outsole

Certified rubber outsole provides reliable grip on various surfaces.



### Style & Comfort

Crafted from premium leather for long-lasting wear and a clean, professional look.



### CoolTech™ Breathable Lining

Keeps your feet cool and fresh all day with enhanced airflow and moisture control.

### Nord Black



➤ Size 36-46

### Nord White



➤ Size 36-46



